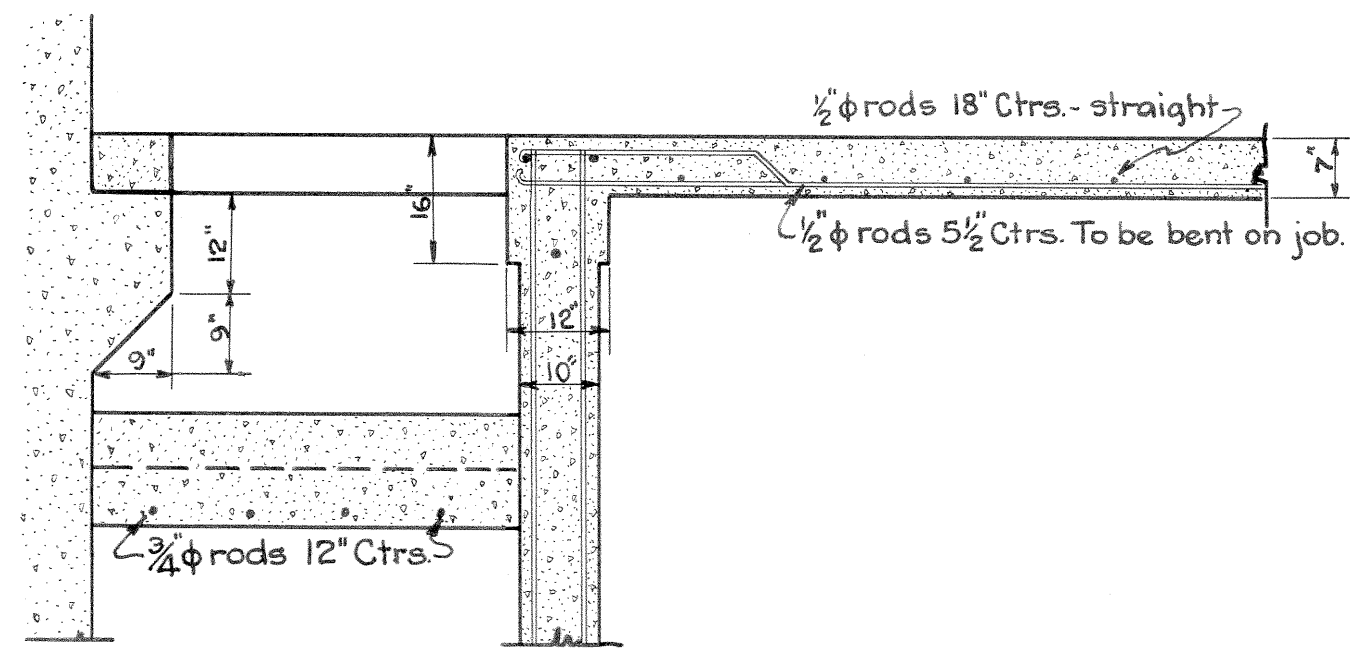


Roof  
 3" Dry 1:2 3/4 Conc. roof supported by  
 Steeltex or equal expanded metal.  
 Stringers 25' span, 24" centers Truscor,  
 Havenmeyer or equal, 105 lb. load.  
 Northwest, ingot, rib lath, 3 1/2 lb. or equal.  
 Plaster, putty coat finish.  
 Four ply composition roof.

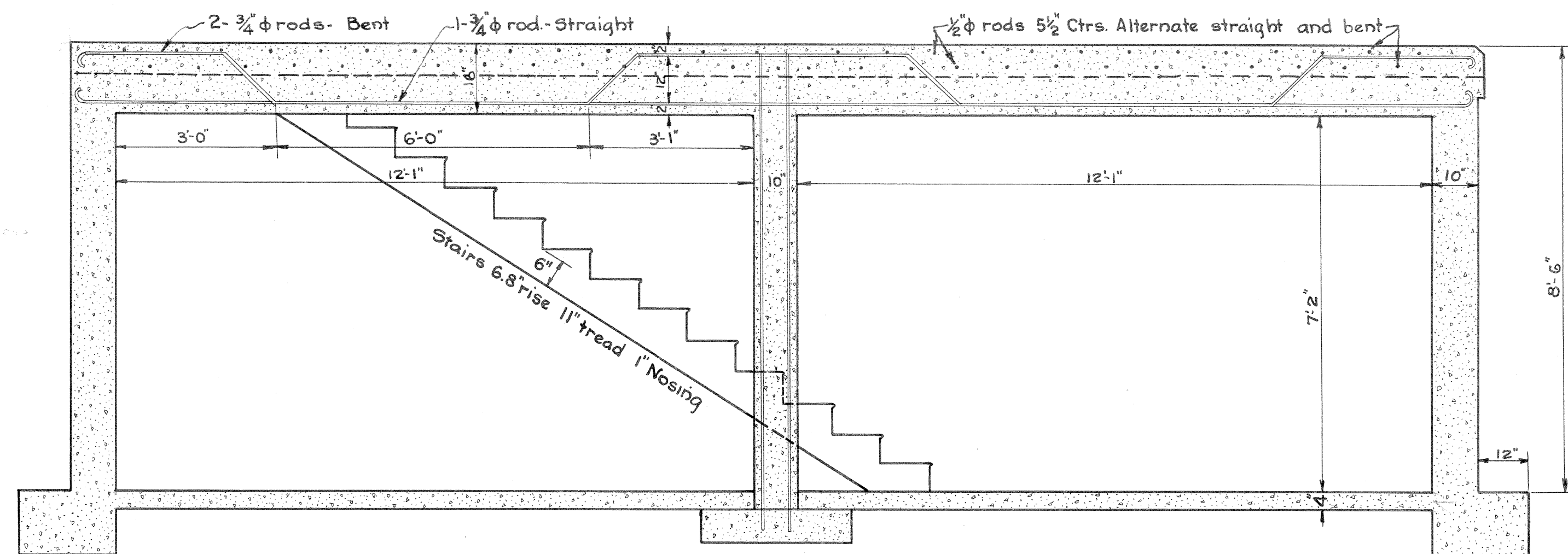
2-4x4x5/8 Angles 12'-0" long  
 2-5x9 Doors Kalemeir or equal  
 4-12x18 Window Panes in each door

**FRONT ELEVATION**  
 Scale 1/2"=1'

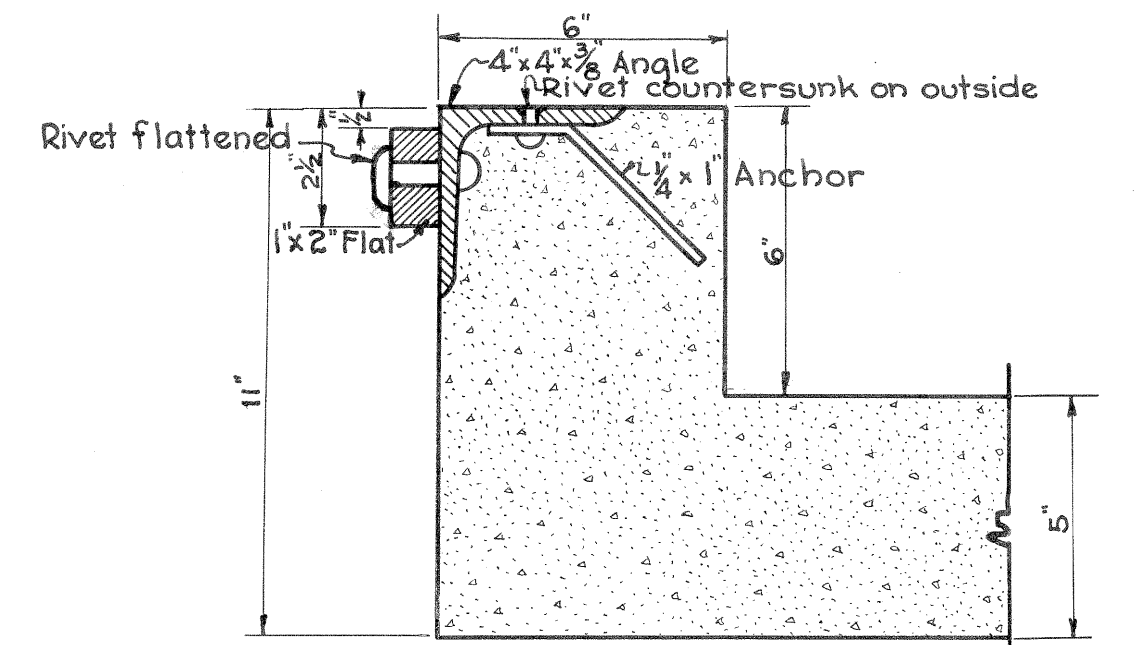
NOTE: Place 2-4x4x5/8 Angles over this door and all windows.  
 Build about 40 ft. of Madison Standard Sidewalk 6' wide  
 from this building to the walk on First St.



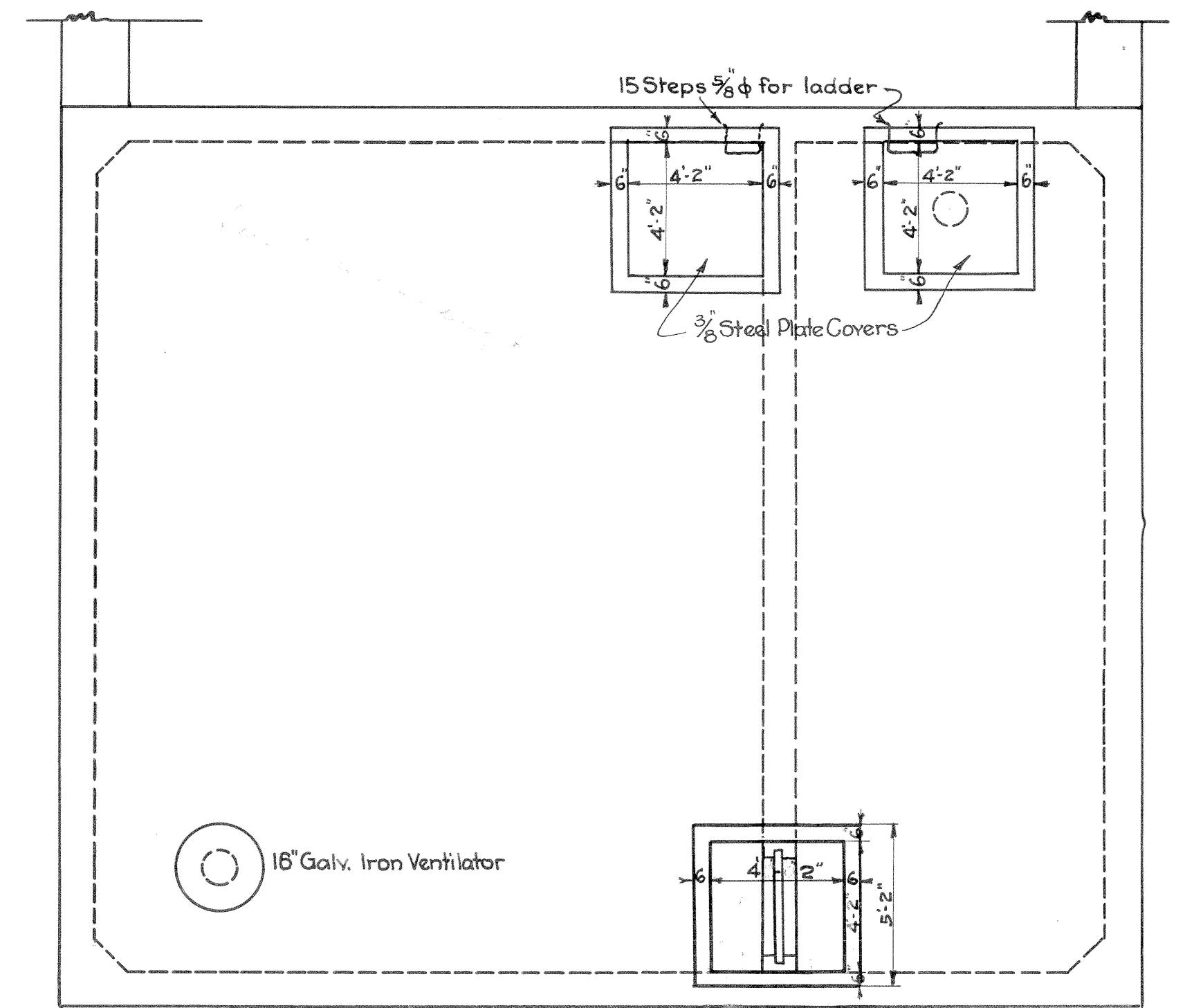
**SECTION OF FLOOR  
 AT STAIRWAY**



**SECTION THRU BEAM AT STAIRWAY**  
 Scale 1/2"=1'



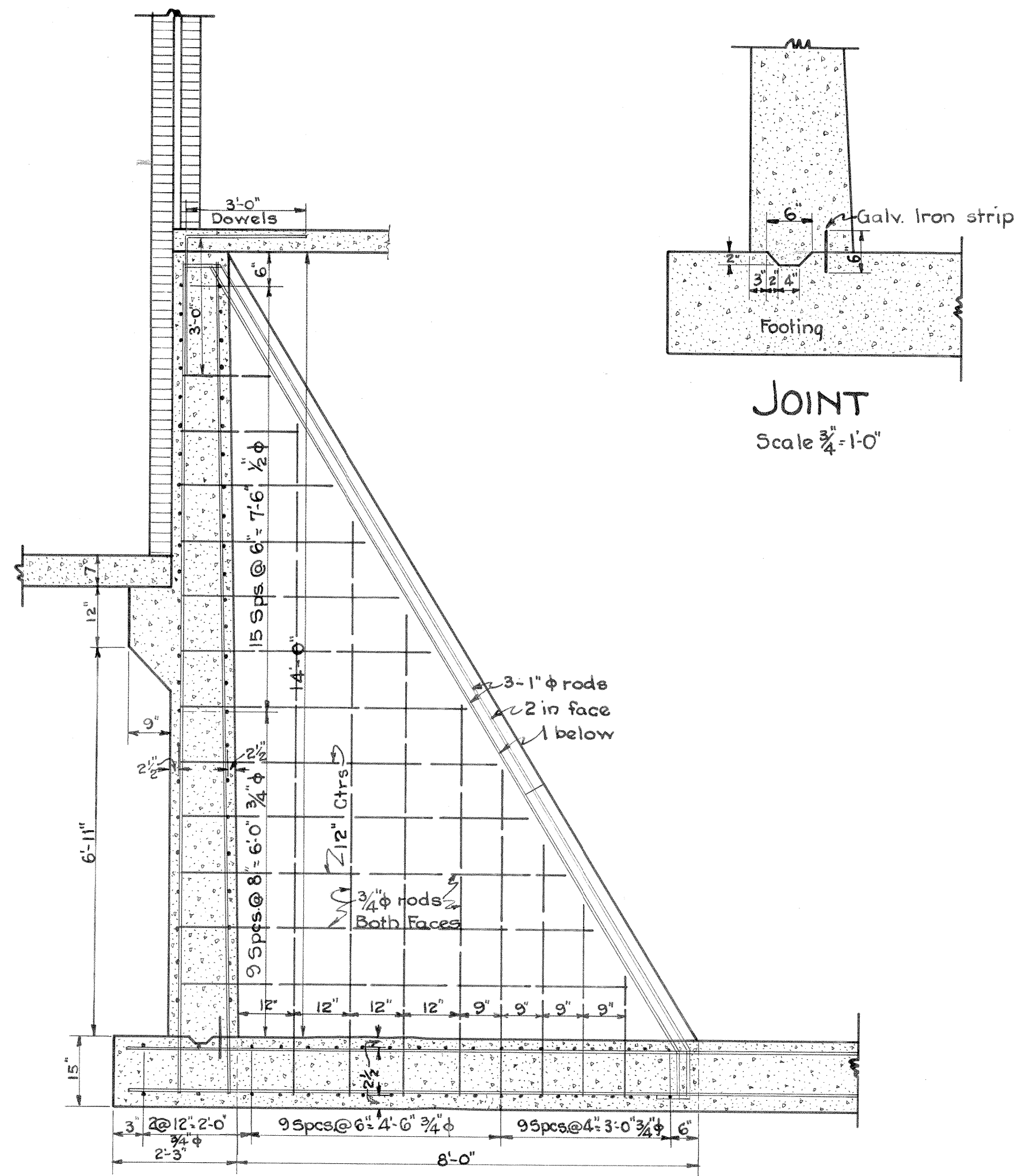
**SECTION THRU COVER FRAME**  
 Scale 3/4"=1'



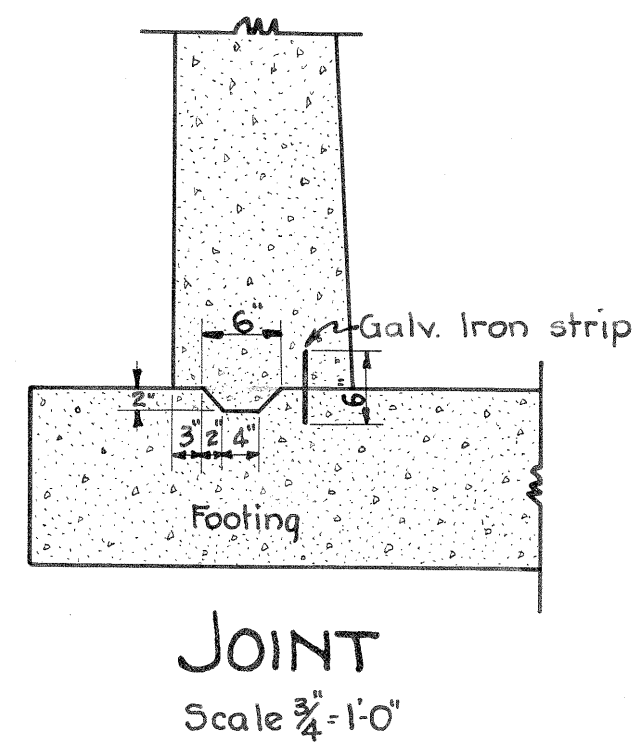
**OPENINGS IN ROOF OF RECEIVING WELL**  
 Scale 1/4"=1'

CITY OF MADISON, WISCONSIN WATER DEPARTMENT	
UNIT WELL NO. 3	
PUMP HOUSE AND RECEIVING WELL	
Scales as shown	September 1928
City Engineer	Supt. Water Dept.
Drawn by E.L.N. Traced by E.L.N.	<b>W57</b>

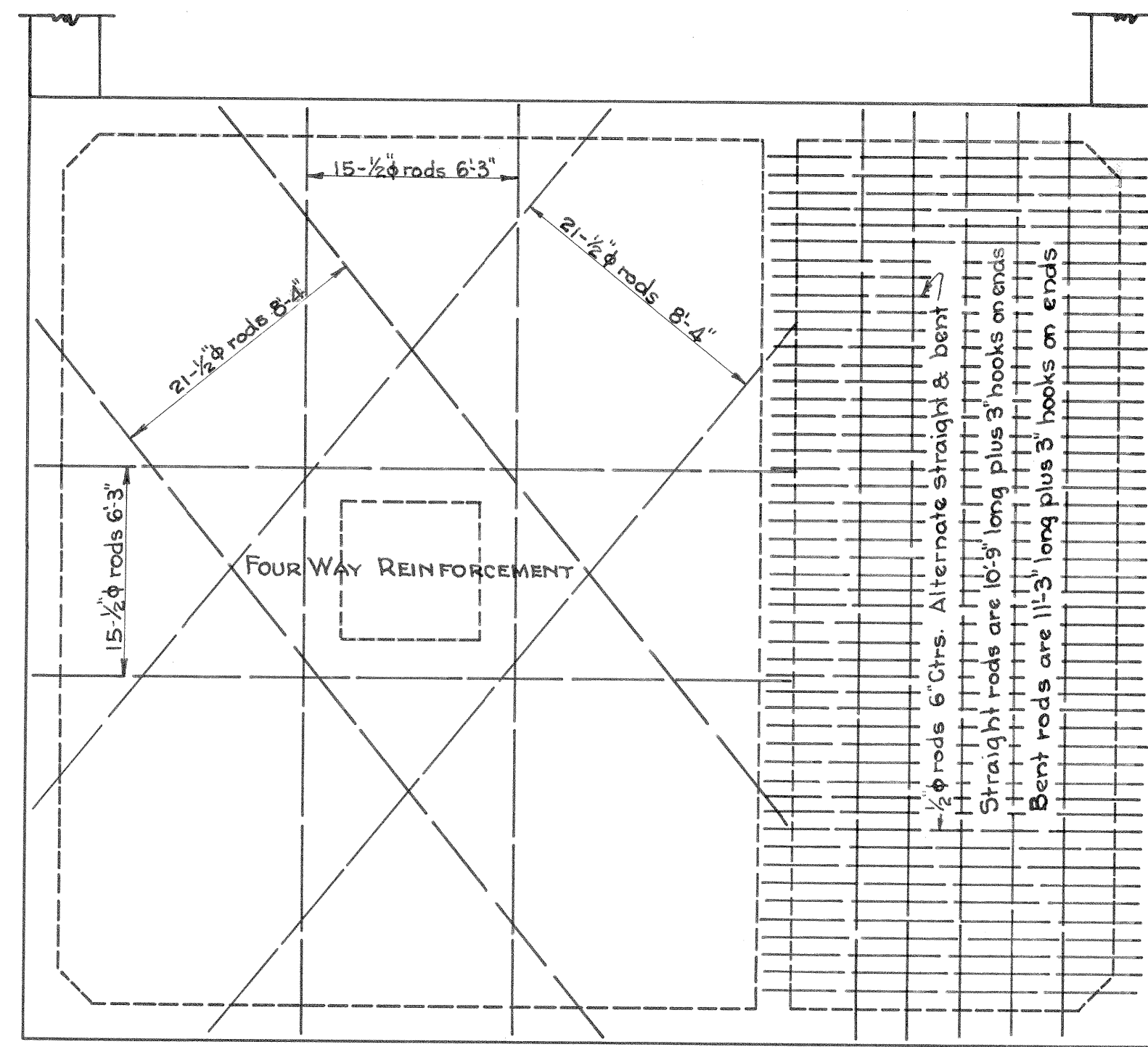




SECTION "BB"



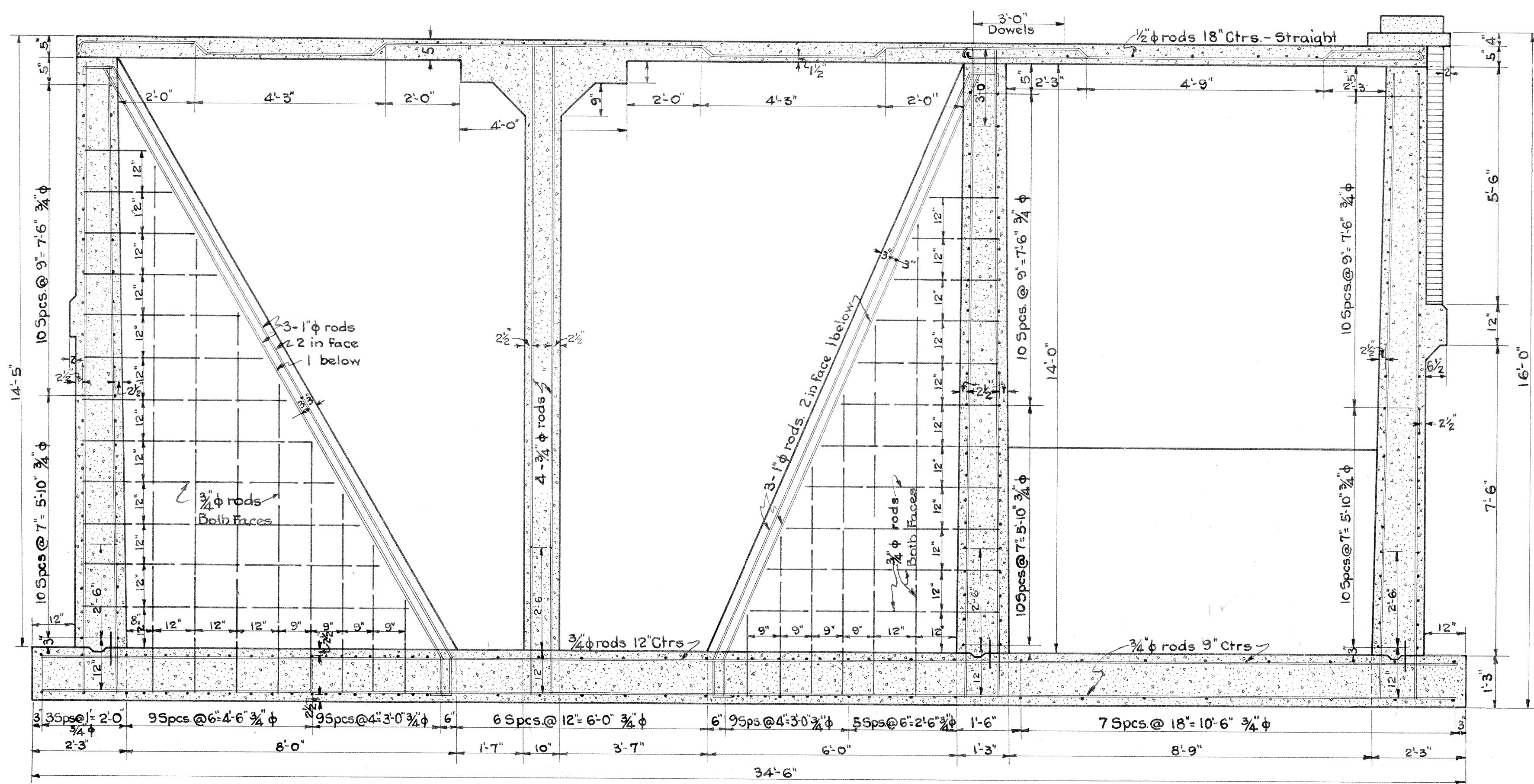
JOINT  
Scale 3/4" = 1'-0"



REINFORCING STEEL IN ROOF

Scale 1/2" = 1'-0"

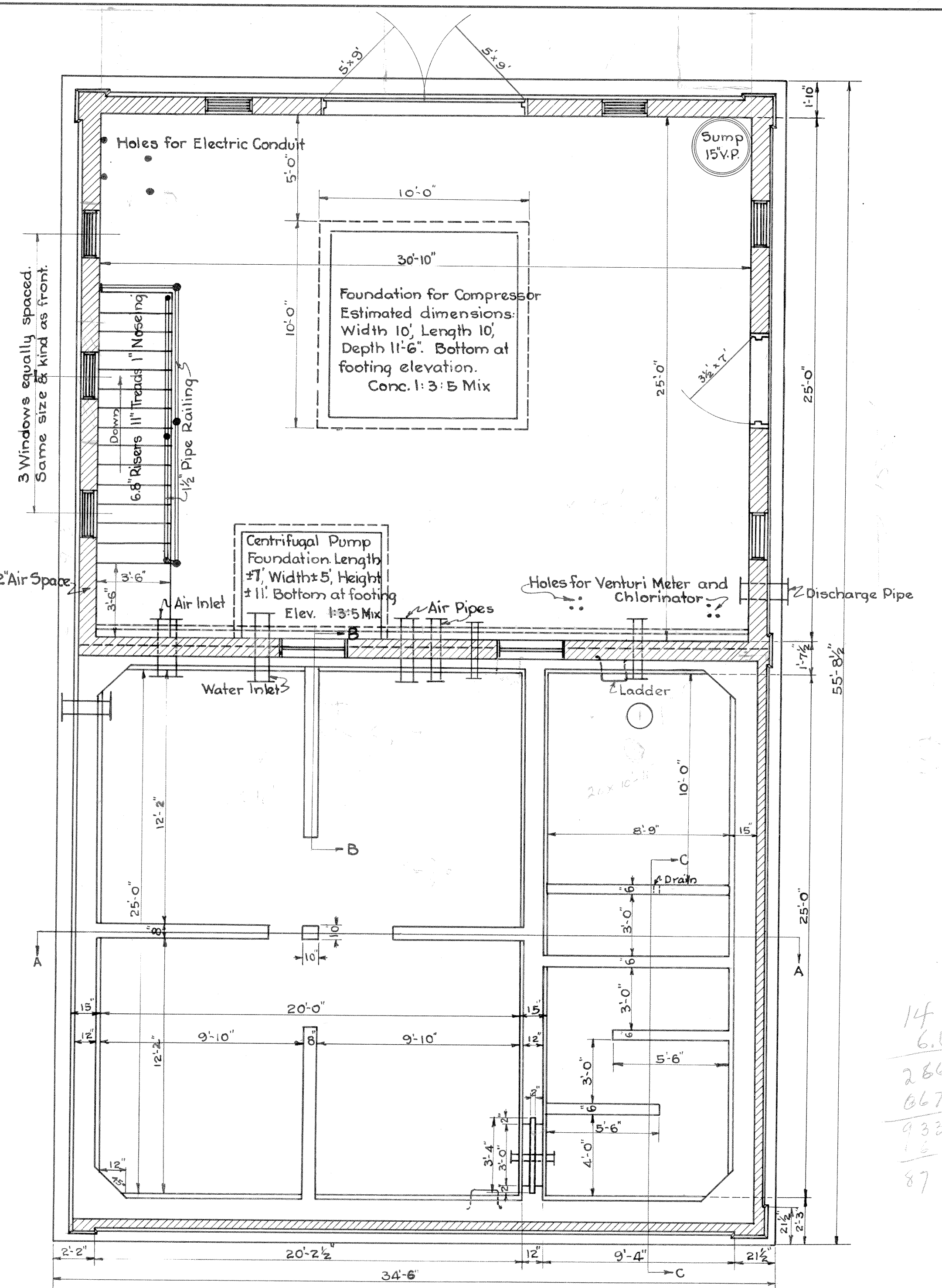
Bend diagonal rods 2' from center of column and 2' from inner edge of outer wall, rectangular rods as shown below.



SECTION "AA"

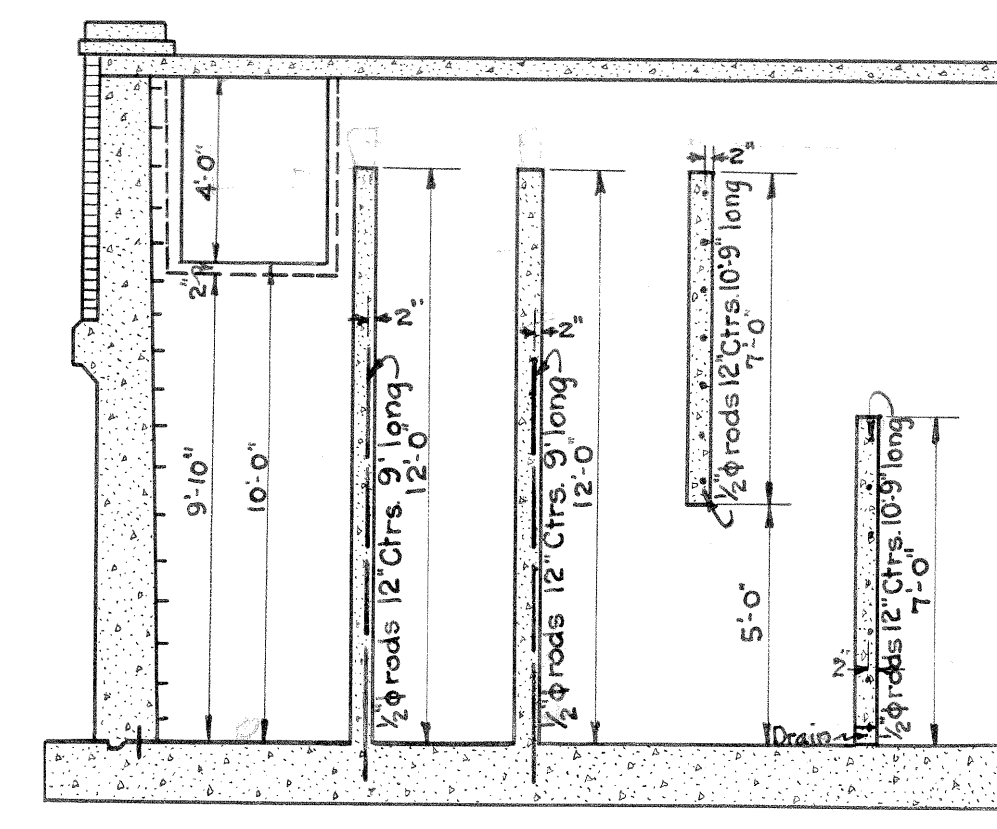
Scale 1/2" = 1'

Place 21-3/4 inch diameter rods 5' long, with hooks, across each outside corner. Bend all horizontal wall steel 2' around each corner, including dividing wall.



PLAN

Scale 1/4" = 1'



SECTION "CC"

Scale 1/2" = 1'-0"

14  
6.67  
2668  
667  
4334  
1.0  
87

Approved by the Common Council Sept. 15, 1928

W.K. Ormender City Clerk

CITY OF MADISON, WISCONSIN  
WATER DEPARTMENT  
UNIT WELL NO. 3

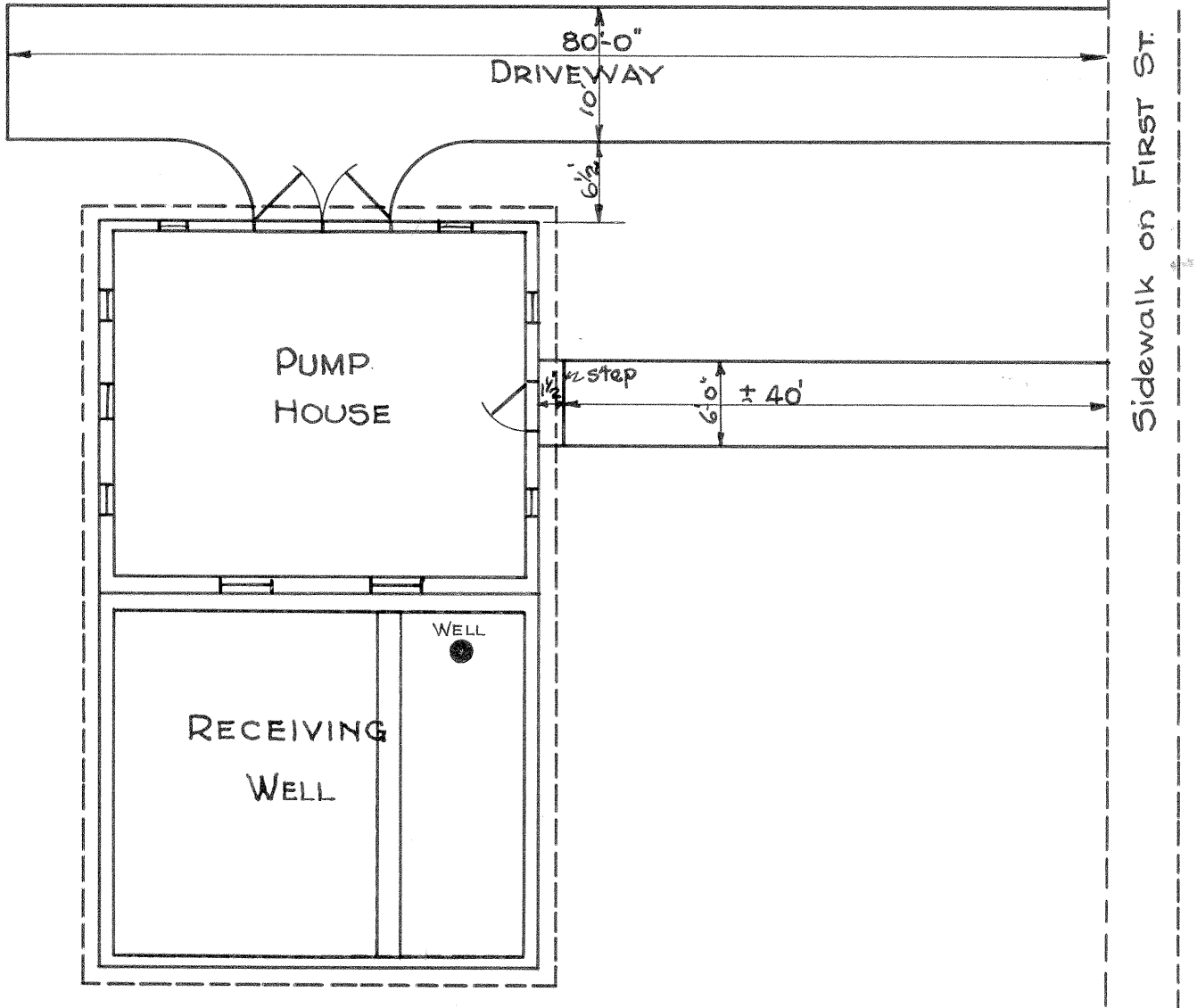
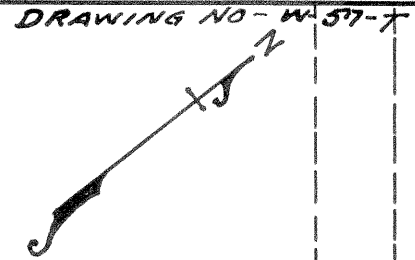
PUMP HOUSE  
AND  
RECEIVING WELL

Scales as shown September 1928

E.E. Camp City Engineer Rasmik Supt. Water Dept.

Drawn by E.L.N. Traced by E.L.N. W57

SEWAGE PUMPING STATION



CITY OF MADISON, WISCONSIN WATER DEPARTMENT		
UNIT WELL NO. 3		
PUMP HOUSE AND RECEIVING WELL		
Scale	<i>W. H. Fisher</i> City Engineer	September 28 Supt. Water Dept.
Drawn: ELN	Traced: ELN	W57